

**339 SOUTH MAIN ST. (U.S. 321-A) – Granite Falls, NC
127 Acres**

SALE PRICE: \$10,000/acre

LEASE PRICE: No

ZONING: Residential

COMMERCIAL AIRPORT: Charlotte-Douglas International

DISTANCE: 56 Miles (One Way)

REGIONAL AIRPORT: Hickory Regional Airport

DISTANCE: 5 Miles (One Way)

DISTANCE TO NEAREST INTERSTATE (I-40): 6.5 Miles

NCPINs: 2784489524, 2784479452,
2784442174, 2784461705

ADDITIONAL INFORMATION

These parcels are located adjacent to the Town of Granite Falls limits and run from U.S. 321-A to the shores of Lake Hickory. Municipal water and utilities would be available, and a rail line extends along the southern portion of the parcels. Great for a residential or apartment development.

BROKER: Jordan Long, Adams Commercial Real Estate **CONTACT:** (828) 564-1449

Hwy 321A Land- Granite Falls, NC. 127+/- Acre Land Development

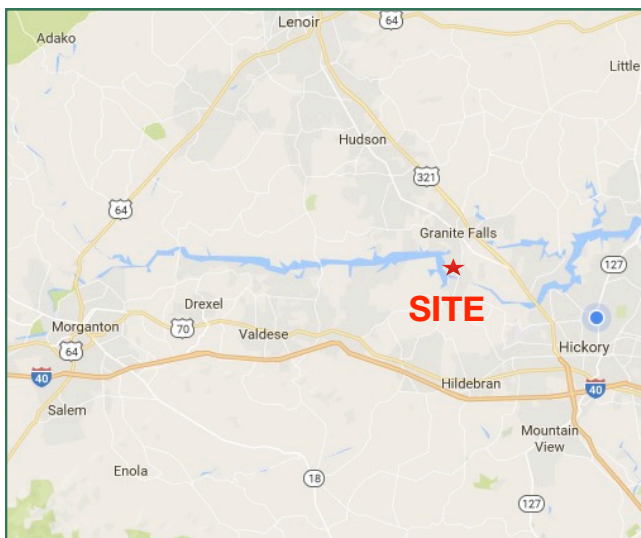
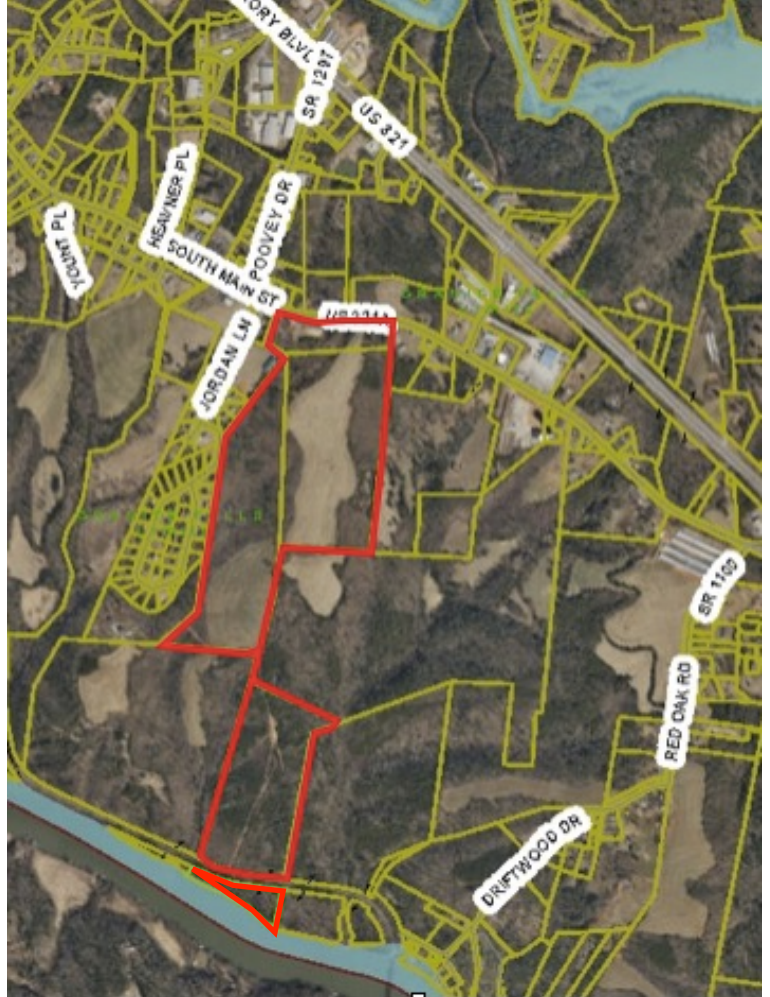
Property Overview

Hickory, NC (MSA) Charlotte Metro (NW)

This site is located on Highway 321A in the south eastern part of Caldwell County.

Property Highlights

- Land is located on a growing thoroughfare and the most direct route to the Mountains of NC
- Approximately 950ft of frontage on Hwy 321A.
- Land is currently being farmed.
- Sloping Topography down to Catawba River.
- Access to Rail road that runs through the southern part of the property.
- Access to City Water and Utilities.
- Price: \$10,000 an acre.



Contact: Donna Adams 828.381.8863
1333 2nd Street NE, Suite 314, Hickory, NC 28601

Adams Commercial Real Estate Services LLC
dadams@acrescarolina.com